

GeoElections News



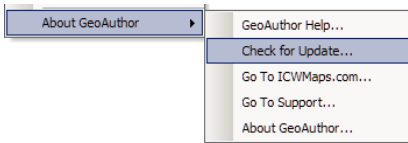
Visit ICW

“Founded in 1904...NASS is the nation’s oldest, nonpartisan professional organization for public officials.”

Among key initiatives the areas of elections and voting are a focus for NASS. Hope to see you in Portland, Maine.

Stay Current At ICW We Are Continually Enhancing Our Applications

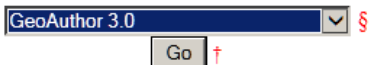
Using GeoAuthor® as an example, make sure you are working with the latest version of software. Go to the **About>Check for Update** menu and the application will automatically take you to the download section of the ICW website.



This is where you will land.



Select the product you wish to download:



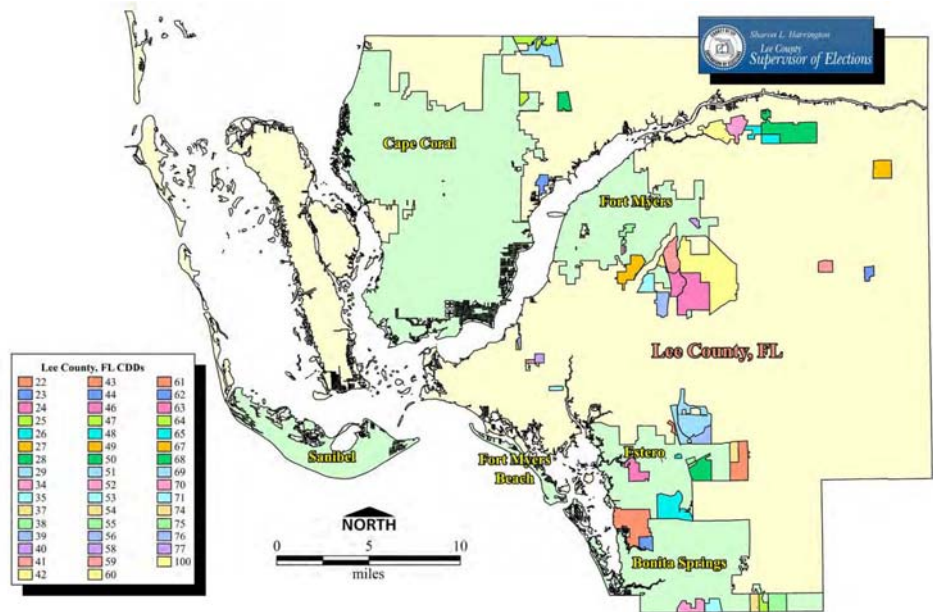
§ If you are upgrading from an earlier version it is recommended that you uninstall any earlier versions prior to the installation of the most current version.

If you need an update, simply follow the instructions printed on the screen. Call for help any time you are in need.

Lee County, FL Office of Supervisor of Elections Joins the GeoElections User Community

Where can you find a D. J. Wilkens sculpture, *Uncommon Friends*, featuring winter residents Thomas Edison, Henry Ford and Harvey Firestone. The answer is Centennial Park in Fort Myers. Which county is the most current to join the GeoElections user community? The answer is Lee County under the management of the Honorable Sharon L. Harrington, SOE.

2015 has been a year of upgrades for the Lee County SOE office to better position the office to provide the mission critical services expected from a seasoned elections official.



Lee County has experienced dramatic growth in population almost double the rate of the balance of the State of Florida. With approx. 416,266 registered voters in 2015 compared to approx. 250,568 in 2000, managing growth takes a special perspective of its own.

Maps that accurately depict geopolitical boundaries within the community serve electors to candidates, incumbents to elections office staff. Because of statutory requirements building upon the PL 94-171 TIGER/Line Shapefiles is a practical and economical means to meet both the statutory demands and operational functions.

Given the abilities of **GeoElections**® to interoperate with voter registration systems, the digital model from which the map is derived becomes a greater value to the elections office than alternative methods.

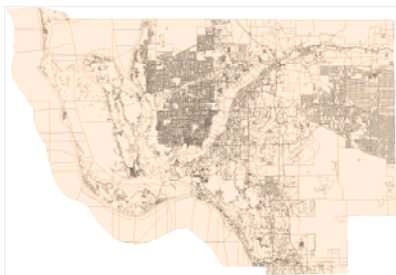
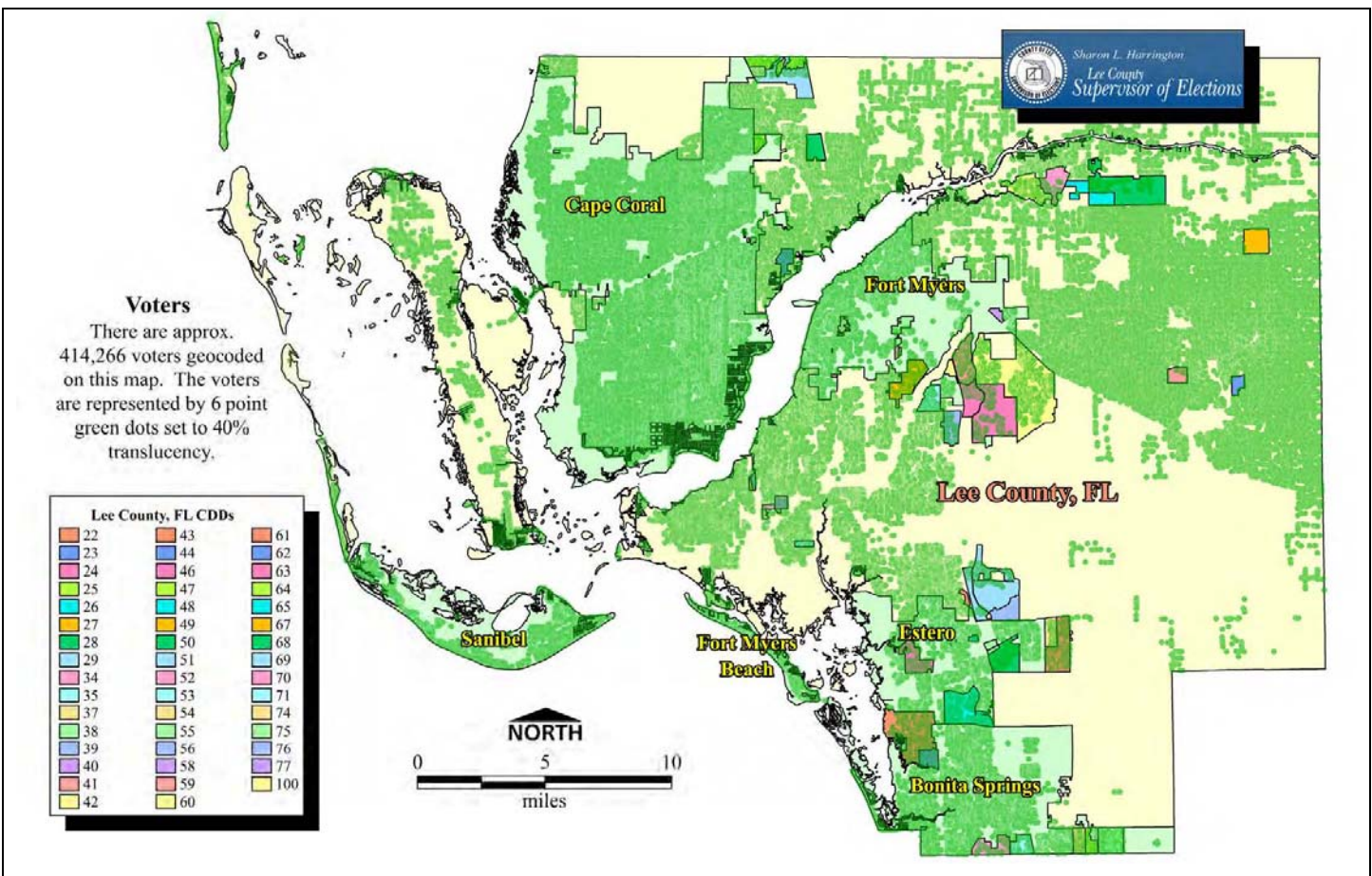
Historical population

Census	Pop.	%±
1960	54,539	133.0%
1970	105,216	92.9%
1980	205,266	95.1%
1990	335,113	63.3%
2000	440,888	31.6%
2010	618,754	40.3%
Est. 2014	679,513	9.8%

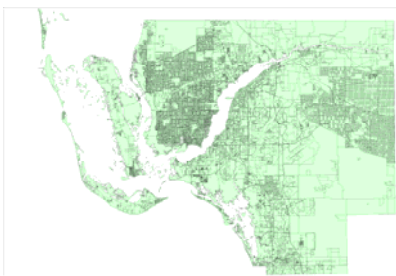
U.S. Decennial Census

ICW, where imagination and geography converge.

Adding geocoded voters to a map provides an instant view of distribution and areas of density.



When coastal counties such as Lee County, FL are land interspersed with bodies of water to the extent of Lee County, creating a published map presents a unique set of problems. Using **GeoAuthor**® and **GeoElections**® one can suppress the display of water blocks.



The image in the upper left consists of all blocks, approx. 21,418. The water blocks in the upper right consist of approx. 1,017 census blocks. The image in the lower left consists of approx. 20,400 of land blocks.



Viewing the two block tables, water blocks shaded blue - land in green, one can appreciate the hundreds of square miles of water that may have to be accounted for in the display of jurisdictional boundaries from Congressional to Special Taxing and everything in between.



The map to the left illustrates in micro form (magnifying lenses are up to the individual to provide) the boundaries of the Congressional, State Senate and State House. Removing the water has the effect of focusing attention on the actual district boundaries, reducing visual distractions. Please post your views on the GeoElections Forum.

ICW, where imagination and geography converge.