

GeoElections News

June 2004 ♦ Temple Terrace, FL ♦ icwmaps.com

VOL. I NO. 2 - ★★★ \$.50

NEWSMAKER



ICW Introduces Real-Time Mapping for Use With GeoElections

ICWAVL[®], powered by MapX, offers real-time mapping for both in vehicle navigation and field data acquisition. The system creates a crumb trail as the operator drives along the roadway. A user definable center line offset allows the operator to travel in their lane and draw the center of the road.

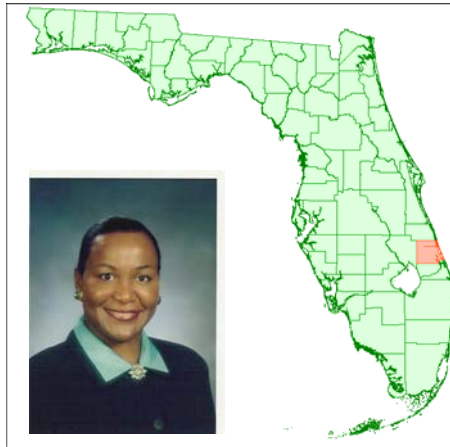
Designed for ease-of-use, one can manage display layers such as roads, railroads, water, political boundaries, etc. to create a moving map display of local geography. The vehicle that **ICWAVL**[®] is tracking remains anchored in the center of the map display while the map data used in the display scrolls using a Global Positioning System (GPS).

ICWAVL[®] is an integrated solution for the elections office. A major benefit in this design is the consistency of the data that appears in the mobile unit and the desktop mapping system.

St. Lucie Selects GeoElections

Gertrude Walker, Supervisor of Elections in St. Lucie County, Florida, selected GeoElections to answer the GIS and web mapping needs of her office.

“The GeoElections Mapping and WebTools are designed to interface perfectly with my voter registration management system (VR Systems, Inc.)”, said Gertrude.



“I feel confident that my mapping system will be ready for the 2006 implementation of the FVRS, a Statewide registration database required by HAVA. The FVRS will rely solely on the Supervisors of Elections for its geographical information component”.

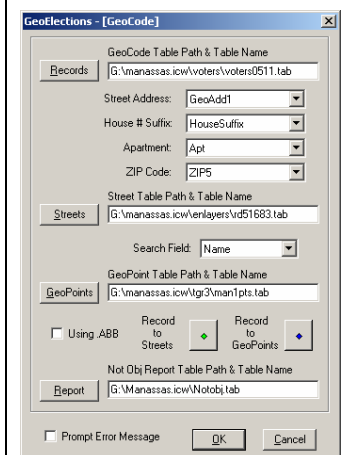
Gertrude is a 36-year Veteran in Election Administration. She has served the last 24 years as Supervisor of Elections. She is an active member of the FSASE, having served in numerous positions over the past 24 years. She is presently serving as First Vice President of IACREOT.

After the 2000 General Election, Governor Jeb Bush appointed her to the Governor’s Select Task Force on Election Procedures, Standards and Technology. In 2001 she was appointed to serve on the Federal Election Commission Advisory Panel. Gertrude is involved in many programs and community projects to improve the quality of life in St. Lucie.

ICW Enhances GeoCoding to Include House Number Suffix

GeoCoding can offer location accuracy to the roof top or parcel centroid with the use of ICW’s GeoPoints and the geocoder included with GeoElections.

With this latest enhancement the user has four options for geocoding voters. The user may geocode to the road using house number, street name and ZIP5. Or use house number, street name and ZIP5 with GeoPoints for more precise placement. GeoPoints offers two additional data elements for voter addressing: a field for apartment, unit or any secondary address; and now the use



of ½ or any other house number suffix that you may find in your community.

ICW, where imagination and geography converge.